



Connexin 25 Polyclonal Antibody

Catalog No	YP-Ab-16999
Isotype	IgG
Reactivity	Human;Rat;Mouse;
Applications	WB;ELISA
Gene Name	GJB7
Protein Name	Gap junction beta-7 protein
Immunogen	The antiserum was produced against synthesized peptide derived from human GJB7. AA range:21-70
Specificity	Connexin 25 Polyclonal Antibody detects endogenous levels of Connexin 25 protein.
Formulation	Liquid in PBS containing 50% glycerol, 0.5% BSA and 0.02% sodium azide.
Source	Polyclonal, Rabbit,IgG
Purification	The antibody was affinity-purified from rabbit antiserum by affinity-chromatography using epitope-specific immunogen.
Dilution	Western Blot: 1/500 - 1/2000. ELISA: 1/10000. Not yet tested in other applications.
Concentration	1 mg/ml
Purity	≥90%
Storage Stability	-20°C/1 year
Synonyms	GJB7; CX25; Gap junction beta-7 protein; Connexin-25; Cx25
Observed Band	24kD
Cell Pathway	Cell membrane ; Multi-pass membrane protein . Cell junction, gap junction .
Tissue Specificity	Weakly expressed in placenta.
Function	function:One gap junction consists of a cluster of closely packed pairs of transmembrane channels, the connexons, through which materials of low MW diffuse from one cell to a neighboring cell.;similarity:Belongs to the connexin family. Beta-type (group I) subfamily.;subunit:A connexon is composed of a hexamer of connexins.;tissue specificity:Weakly expressed in placenta.,
Background	Connexins, such as GJB7, are involved in the formation of gap junctions, intercellular conduits that directly connect the cytoplasm of contacting cells. Each gap junction channel is formed by docking of 2 hemichannels, each of which contains 6 connexin subunits (Sohl et al., 2003 [PubMed 12881038]).[supplied by OMIM, Mar 2008],
matters needing attention	Avoid repeated freezing and thawing!



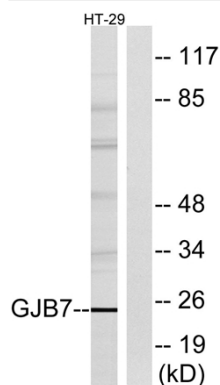
Usage suggestions

This product can be used in immunological reaction related experiments. For more information, please consult technical personnel.

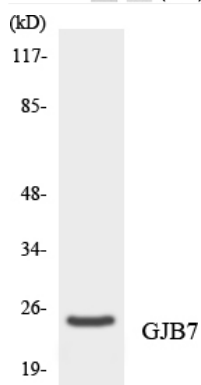
Products Images



Western Blot analysis of various cells using Connexin 25 Polyclonal Antibody diluted at 1:500



Western blot analysis of lysates from HT-29 cells, using GJB7 Antibody. The lane on the right is blocked with the synthesized peptide.



Western blot analysis of the lysates from HeLa cells using GJB7 antibody.